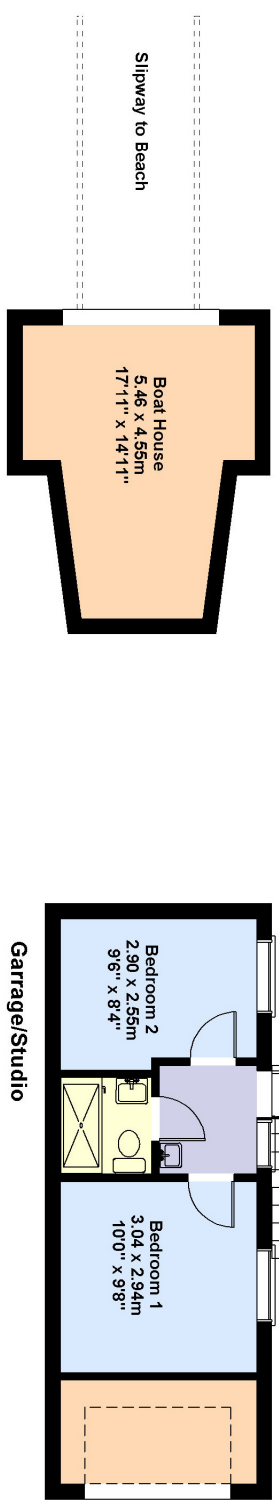
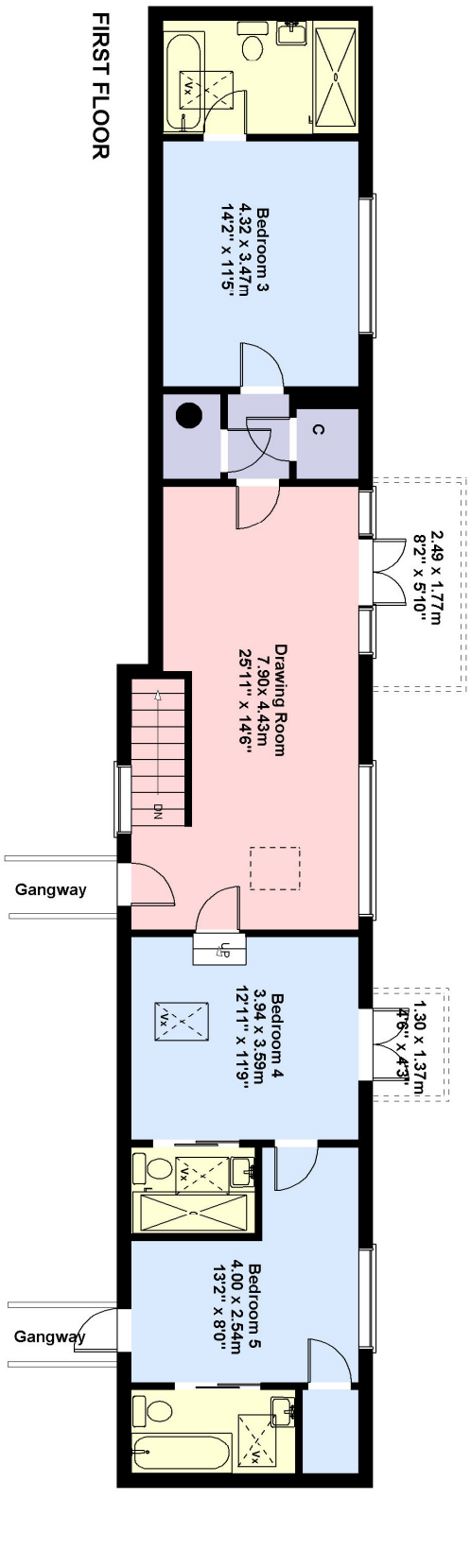
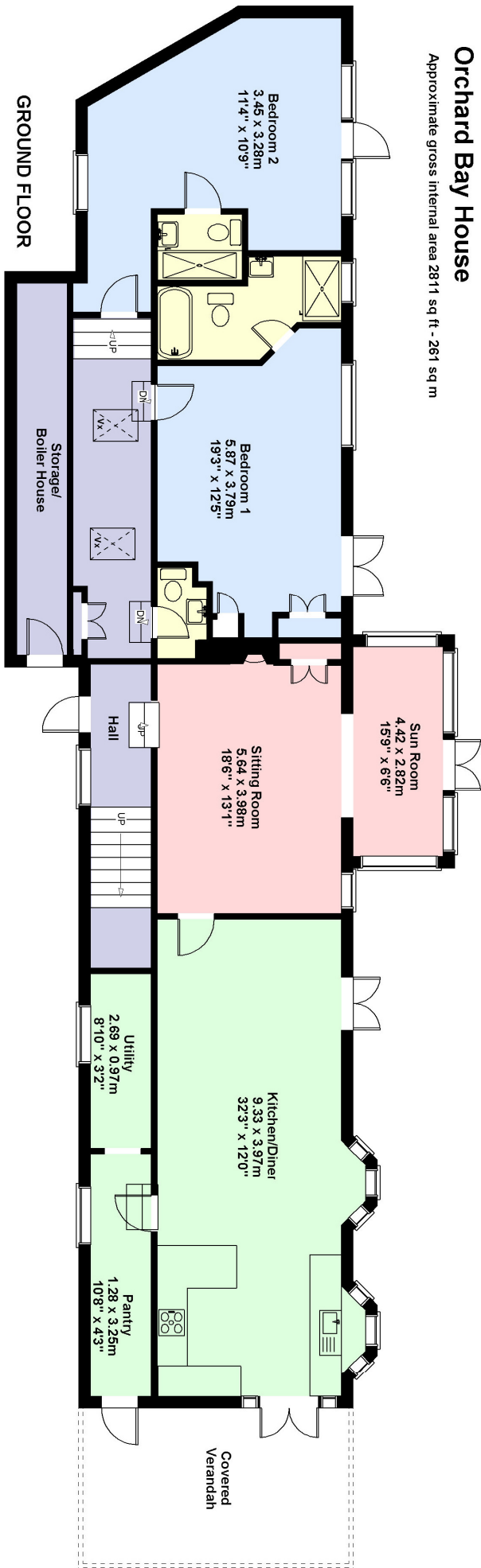


Orchard Bay House

Approximate gross internal area 2811 sq ft - 261 sq m



SKETCH PLAN NOT TO SCALE FOR IDENTIFICATION ONLY
 The placement and size of all walls, doors, windows, staircases and fixtures are only approximate and cannot be relied upon as anything other than an illustration for guidance purposes only. No representation has been made by the seller, the agent or PotterPlans
 www.potterplans.co.uk